

Panafax UF-9000 does it all.

print it!

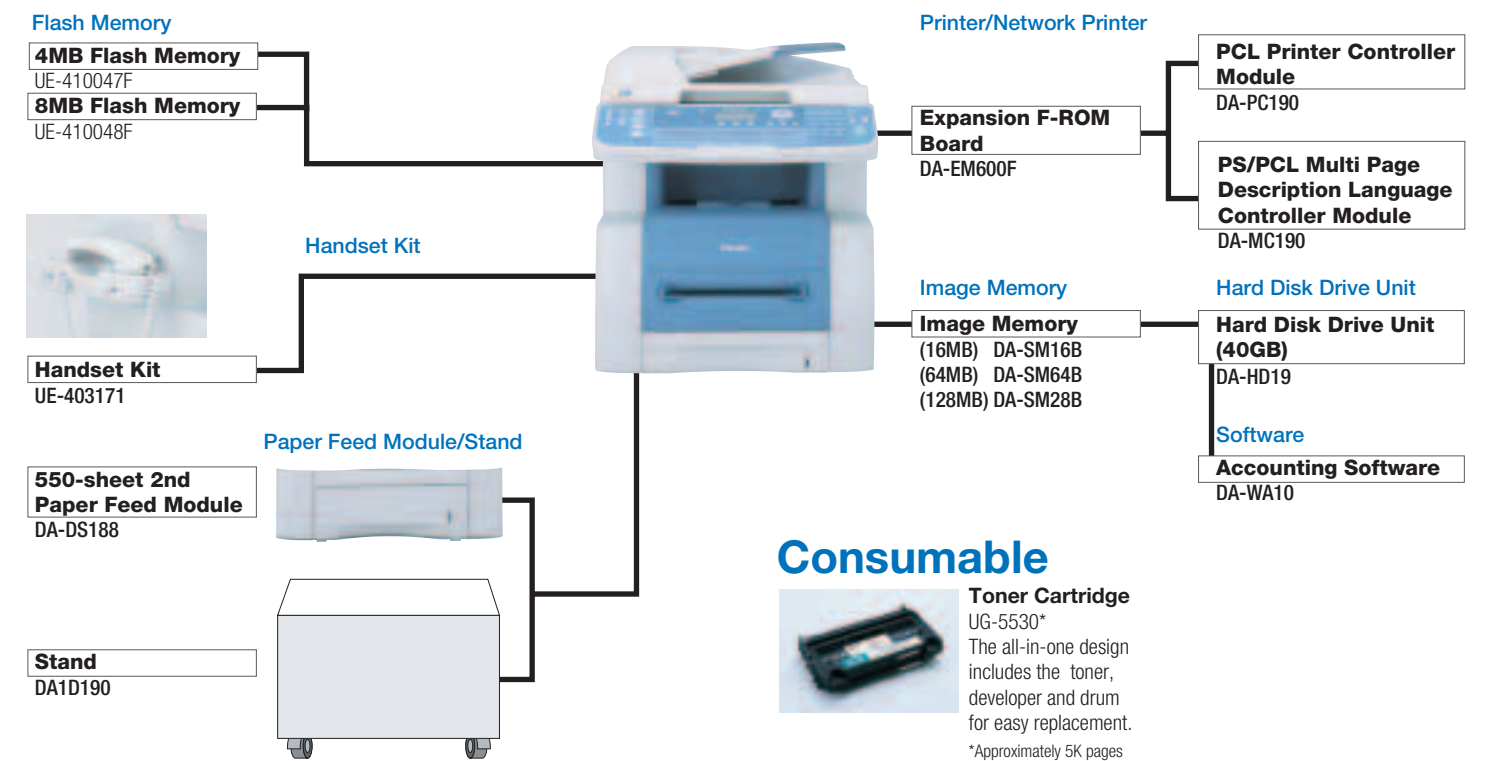
The network-ready UF-9000 links seamlessly through an Ethernet and/or USB interface enabling high-resolution prints at speeds of up to 19 ppm; making this powerful multifunctional device ideal for departmental and workgroup users.

The UF-9000 comes with features such as duplex printing/copying and N-in-1, making double-sided prints or copying multiple originals onto a single sheet of paper a snap!

Document processing should be the least of your worries. For increased performance and productivity, the UF-9000 enables document management and document processing via the Panafax® Desktop and Panasonic Document Management System (P-DMS) software. Additional features such as Security Print/Mailbox and Completion Notice enables performance of various functions without having to leave your desk.

The Panafax® UF-9000 measures up to the test, so put one to work for your business today.

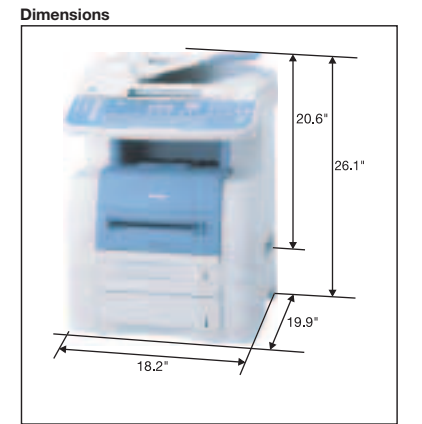
Options



UF-9000 Specifications

General	
Type	Desktop
Warm-up time (from sleep mode)	Approximately 15 seconds
Power Requirements	AC 120V, 50/60Hz
Power Consumption	Maximum: 900 Wh Power saver mode: 20 Wh Sleep mode: 12 Wh
Dimensions (W x D x H)*1	18.2" x 19.9" x 20.6" (462 x 506 x 523 mm)
Weight*1	Approximately 48.5 lb (22 kg)
Fax	
Compatibility	ITU-T Group 3, ECM
Modem Speed	33.6 - 2.4 kbps with automatic fallback
Coding Scheme	MIV/MRV/JBIG
Transmission Speed*2	Approximately 2.7 seconds
Number of Memory Job Files	50
Document Size	Maximum: 8.5" x 78.7" (216 mm x 2,000 mm*) (with operator's assistance) Minimum: 5.8" x 5.0" (148 mm x 128 mm) 8.34" (212 mm)
Effective Scanning Width	50 sheets (20 lb)
Automatic Document Feeder	Approximately 2.7 sec./page (Letter)
Scanning Speed	Standard: 203 dots/inch x 98 lines/inch (8 dots/mm x 3.85 lines/mm)
Scanning Resolution	Fine: 203 dots/inch x 198 lines/inch (8 dots/mm x 7.7 lines/mm) Super Fine: 406 dots/inch x 391 lines/inch (16 dots/mm x 15.4 lines/mm)
Recording Method	600 dpi: 600 dpi x 600 dpi Monochrome laser printing on plain paper
Recording Paper Size	Letter/Legal
Effective Recording Width	8.15" (207mm)
Paper Feed	Standard Tray: 250 sheets Optional Paper Feed: 550 sheets
Image Memory Capacity	Standard: 2MB (120 pages)*4 Optional: 4MB (320 pages)*4 8MB (640 pages)*4
Number of Auto Dialers	200 Maximum: 1000 with optional Hard Disk Drive Unit

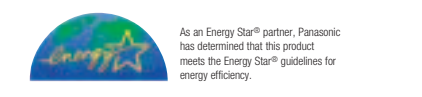
Digital Copier	
Original Size	Letter/Legal/Invoice (LG: only using ADF)
Resolution	600 x 600 dpi
Zoom	50% - 200%
First Copy Time	Approximately 10 seconds
Multi Copy Speed	Up to 19 ppm*6 (Letter)
Copy size	Letter/Legal/Invoice*5
Exposure Controller	Text, Text/Photo, Photo
Sort Memory	Uses JBIG Compression
Sort Memory	16MB
Standard	Base Memory (16MB) plus 16MB/64MB/128MB (max. 144MB)
Optional	12GB (with optional HDD)
Printer	
Network Printer Interface	Ethernet 10Base-T/100Base-TX
Local Printer Interface	USB 1.1
Printing Speed	Up to 19 ppm*6
Paper Size	Letter/Legal/Invoice*5/Envelope*5
Printing Resolution	Maximum: 1200 equivalent x 600 dpi
Printer Memory	20MB
Standard Network Printing	Panasonic Printing System for Windows
Page Description Language (Option)	PCL 6 Emulation, Adobe® PostScript® 3™
Compatible Operating Systems	Windows® XP/2000/Me/98, Windows NT® 4.0 MAC OS 8.6-10.1 (PS only)
Scanner	
Network Scanner Interface	Ethernet 10Base-T/100Base-TX
Communication Protocol	LPR, FTP
Scanning Speed / Resolution	Color: Approximately 11 sec./page (Letter) Standard: 75 x 75 dpi Fine: 150 x 150 dpi Super Fine: 300 x 300 dpi
Data Format	B/W: Approximately 2.7 sec./page (Letter) Standard: 150 x 150 dpi Fine: 300 x 300 dpi Super Fine: 600 x 600 dpi Color: JPEG, PDF B/W: Multi-page TIFF, PDF
Scan-to-Email / Internet Fax	
Compatibility	IEF RFC 2305, ITU-T 37
Communication Protocol	TCP/IP, SMTP, POP3, MIME, DHCP, LDAP, SNMP/MIB
Network Connectivity	Ethernet 10Base-T/100Base-TX
Data Format*7	TIFF, PDF, JPEG



Notes
 *1 Dimensions and weight are approximate.
 *2 Transmission time applies to memory transmission of text data using only ITU-T Image No.1 between the same models at maximum modem speed. Transmission time may vary in actual usage. Usually public telephone lines can only support communication speeds of 28.8 Kbps or lower. Via PBX, transmission speed may fall back to a lower speed.
 *3 Standard-Fine mode
 *4 Based on ITU-T Image No.1 scanned in Standard mode.
 *5 Bypass only
 *6 Speeds are contingent upon applications, machine configuration and status; individual speeds may vary.
 *7 Internet Fax only supports TIFF format.

Design and specifications are subject to change without notice. Not all options may be available at the time of recording.

Microsoft® Windows® and Windows NT® are registered trademarks of Microsoft Corporation.
 Adobe®, PostScript®, PostScript® 3™, PDF and PostScript logo® are trademarks of Adobe Systems, Inc.
 PCL is either a trademark or a registered trademark of Hewlett-Packard Company.



Panasonic
 Panasonic Digital Document Company
 Unit of Matsushita Electric Corporation of America
 Two Panasonic Way, Secaucus, NJ 07094
 For a local dealer, please call 1-800-742-8086
 http://www.panasonic.com/office

ISO 9001 Quality Management System
 Our business processes which produce document, information and network products, from manufacturing to marketing, conform to ISO9001 Quality Management System standard. Design, development, manufacture, installation, repair and maintenance of document, information and network products, their associated devices and consumables.
 In addition, the plants outside Japan have acquired ISO 9001 certification.

UKAS MANAGEMENT SYSTEMS CERTIFICATION
 9001

FAX-UF9000-BR

Panafax®
 UF-9000

send it! print it!

- Super G3 Fax with JBIG
- Flatbed Color Scanner
- Scan-to-PC/Email
- Up to 19 ppm Print Speed
- Standard Duplex Printing
- Standard Network Printing/ Scanning/Document Management
- Digital SkyShot/Double Exposure



Panasonic ideas for life

It's a **network color scanner**,
 it's a **fax**, it's a **network printer**.

send it!

Welcome to the world of cutting-edge imaging technology. The Panafax® UF-9000 delivers more versatility, higher reliability, greater ease of use, and expanded network connectivity for your business.

The UF-9000 is a network-ready MFP with automated network installation capability.* Simply plug the cable into the UF-9000's Ethernet port and the network information is automatically acquired.
What more could you ask for?

The UF-9000 allows users to scan virtually any type of document directly from the flatbed scanner, turn it into a PDF, custom name it, and send it to a networked PC.

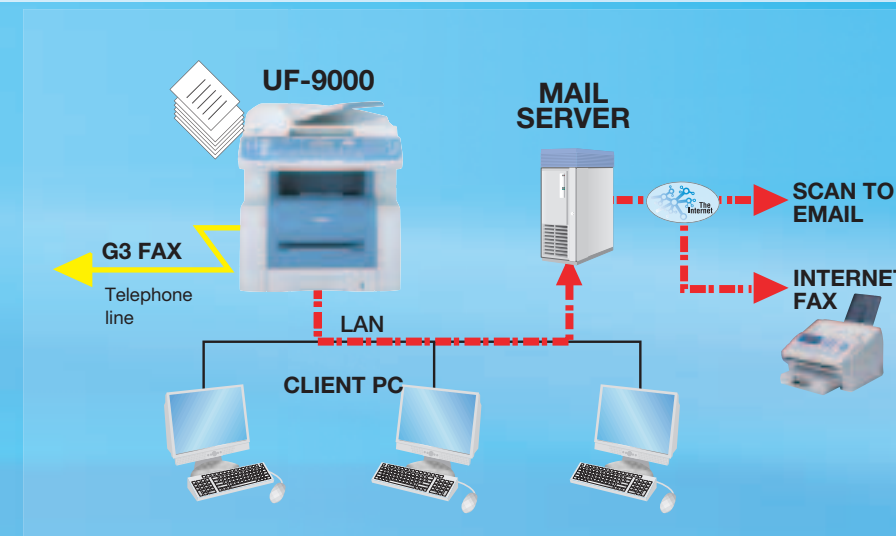
The UF-9000's high-speed Super G3 fax with JBIG compression transmits at about 2.7 seconds per page. In addition to the diverse fax features, users will appreciate the UF-9000's email and internet capabilities; and the UF-9000 even *scans in color* taking your business to the next level of document processing.

The versatile UF-9000 sets the standard for network integration and provides the power of a big business office system in a single, compact, easy-to-use unit.

*Requires a DHCP server on the network.

Copy it, print it, scan it, share it, email it and fax it—fast.

More ways to send



Super G3 Fax

Fully compliant with the ITU-T V.34 standard, the UF-9000's Super G3 33.6 kbps fax modem transfers a high-quality full-page image in as few as 2.7 seconds.** Thanks to the advanced JBIG compression image coding, fax documents are effectively transmitted while halftone images are clearly reproduced at the destination.

Internet Fax

Save time and money by scanning documents and sending them directly to Internet fax platforms. Broadcasting to multiple email and G3 fax terminals simultaneously is also possible.



Network Color Scanning

Scan-to-PC

Scan-to-PC provides the power of digitizing virtually any kind of document from handwritten notes to sketches into a PDF, TIFF or JPEG and then transfer it to a networked PC.

Scan-to-Email

Scan-to-Email allows users to scan a document into a PDF, TIFF or JPEG and attach it to an email message.

Auto Archive

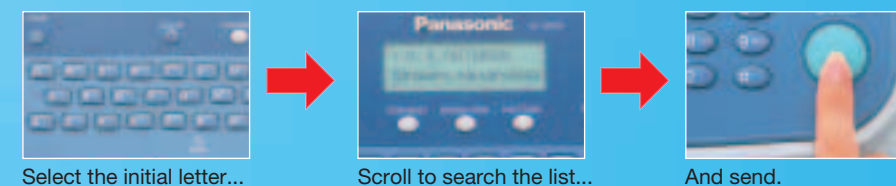
From the UF-9000, whether sending or receiving a fax, a CC (Carbon Copy) can be forwarded simultaneously by email to any specified PC (Supervisor) for inspection or review.

Easy Address Registration and Directory Services (LDAP)**

The UF-9000 allows users to store up to 1000* fax and/or email addresses, which can be maintained directly from the users desktop. The UF-9000 also functions as a Lightweight Directory Access Protocol (LDAP) client, which allows for easy access to email addresses stored on a mail server. The LDAP directory also allows users to easily program their own autodial list.

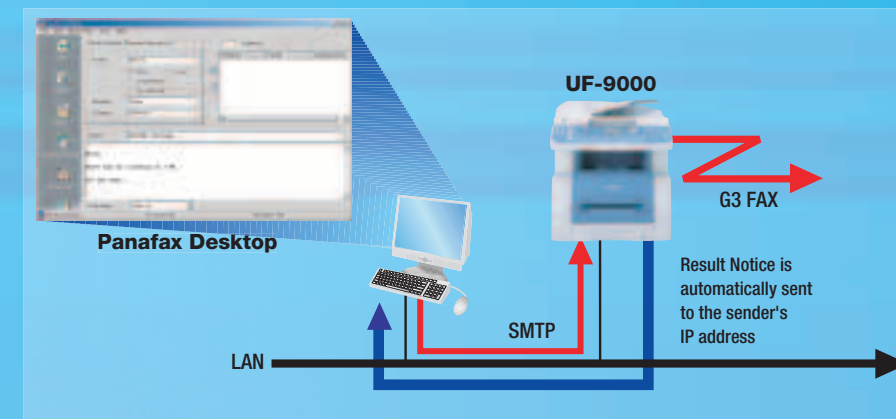
*Available only if the optional hard disk unit is installed.
**Requires an LDAP server on the network.

Sending made easy with Quick Name Search



Panafax® Desktop Software

The Panafax Desktop software allows users to send a fax directly from their PC without having to print it before transmitting. The PC fax capability increases productivity while decreasing paper consumption.



send it!

Network Color Scanner

Color documents can be scanned as PDF or JPEG images at up to 300 x 300 dpi, while black and white documents can be scanned as PDF or TIFF images at up to 600 x 600 dpi via the flatbed scanner or ADF. The UF-9000's flatbed scanner also enables scanning of various types of media such as books and magazines, and even smaller items such as ID cards and receipts.



QWERTY Keyboard

A standard "QWERTY" keyboard—just like on your PC—allows for quick and easy typing (Email addresses, file names, etc.)



Quick Name Search File Naming

Quick Name Search enables quick and easy access to stored fax numbers or email addresses via the QWERTY keyboard. Simply type the first letter of the recipients name, scroll through the listings that appear on the display, and select the contact name. *It's just that simple!* *One Touch Dial can be chosen instead of Quick Name Search.

Quick Memory Transmission

With Quick Memory Transmission, as soon as the first page of a multi-page fax has been scanned, the UF-9000 starts dialing. Transmission takes place as the additional pages are being scanned, which saves time while increasing productivity.

50-sheet ADF

With the 50-page Automatic Document Feeder (ADF), users can fax, copy, scan and email multi-page documents at the touch of a button.



print it!

Ethernet/USB Connection

The UF-9000 links seamlessly through an Ethernet and/or USB interface enabling high speed printing of up to 19 ppm. The robust UF-9000 is a superb network printer that's ideal for departmental or workgroup users.



Duplex Printing/Copying

For higher productivity and lower paper consumption, the built-in automatic duplex unit enables copying and printing on both sides of a sheet of paper. This feature is also functional for incoming fax documents.

N-in-1 Printing/Copying

N-in-1 is a cost efficient feature that enables copying of multiple originals onto a single sheet of paper, accelerating document production while reducing paper consumption.



High Resolution 1200 equivalent x 600 dpi

In addition to true 600 x 600 dpi printing resolution, Panasonic's exclusive image enhancement technology further improves the print quality to a maximum of 1200 equivalent x 600 dpi providing superb photo and graphics reproduction.

Bypass

Changing paper trays for different media types or designating a paper tray for company letterhead is not necessary with the UF-9000. Users can manually feed items such as letterhead, envelopes, and stationary directly through the UF-9000's bypass eliminating costly printing errors.



Printing and Copying made easy with the UF-9000.

More ways to print

User-Friendly Interface

The UF-9000 sets new standards for ease of operation allowing users to take full advantage of all the advanced features. The left-to-right menu arrangement follows the natural flow of work and takes the complexity out of the most challenging jobs.

Network Status Monitor

This convenient feature allows users to easily monitor the UF-9000's status directly from their desktop. For example, users can monitor their print job status, paper misfeeds, machine configuration, and many other capabilities. The status monitor enables a quick response to low toner or paper supply, avoiding costly downtime.

Completion Notice

As soon as a print job is completed, the UF-9000 automatically sends a Completion Notice to the users' desktop notifying them that their job is finished, eliminating wasted trips to check the machines print job status.

Security Print/Mailbox*

The UF-9000 allows security printing for up to 100 users. Simply print directly to the Security Print Mailbox* and the UF-9000 stores that data until the user retrieves it at the machine by entering their eight digit user ID and four digit password. This feature is very beneficial when generating sensitive and confidential documents. *Only available if the optional hard disk unit is installed.

Extended Reliability

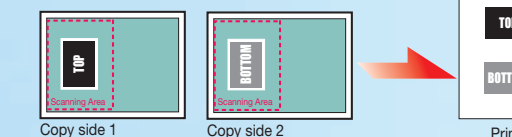


The UF-9000's Check & Call function automatically reports low toner status and certain mechanical problems to a service center. The Remote Diagnostic System enables expert technicians to quickly troubleshoot and provide solutions via a telephone line or the internet.

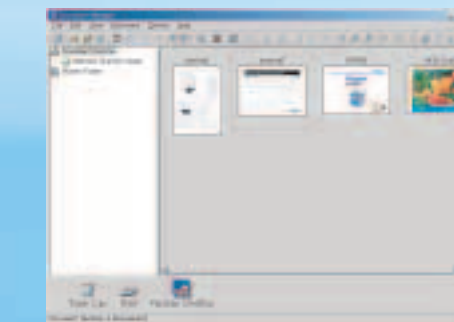


Double Exposure for Double Savings

By selecting the Double Exposure key located on the control panel, even if the platen cover is open, copying small double-sided documents onto a single sheet of paper without the black borders is possible. Businesses that frequently copy small double-sided originals such as ID cards, insurance cards, receipts, and cancelled checks will appreciate Double Exposure.



Document Management System Software



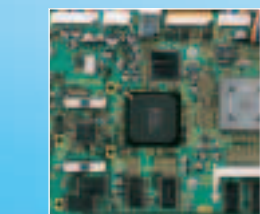
With the Panasonic Document Management System software, users have efficient document management, and the ability to edit and share scanned documents right at their fingertips. Users can manage and edit documents right from their desktop with a simple "drag and drop" operation.

User Friendly



Easy Front Operation
Everything is easily managed from the front of the unit: paper loading, toner replacement, and fax, copy and printer output.

Fast Processing



Behind Speed and Quality
Powered by a high-performance microprocessor and custom-developed LSIs, the improved imaging processing speed and quality ensures high-speed printing of crisp high-quality images.